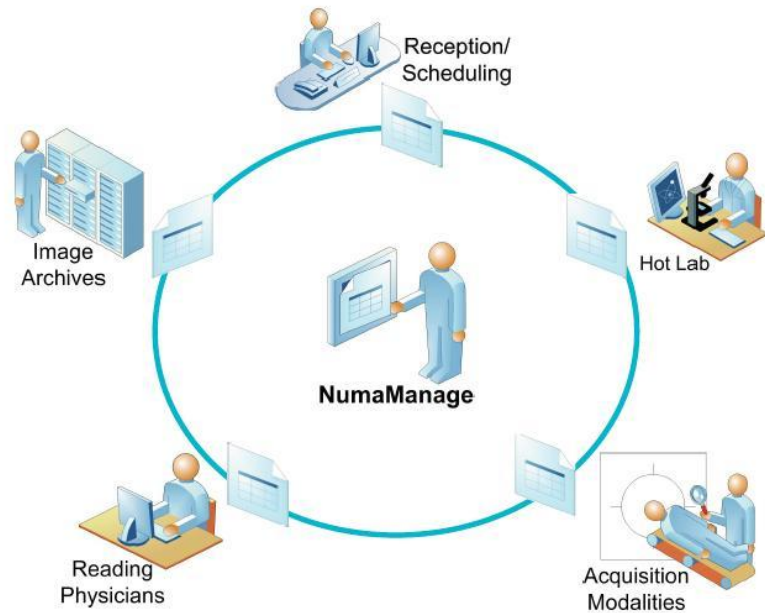


NumaManage™



Patient Scheduling and Workflow Manager

The management and distribution of accurate patient information within a department and between departments is essential to quality patient care. Patient data is often entered into several computers throughout the department as the patient study is scheduled and performed. Multiple entry points wastes valuable personnel time and leaves more opportunity for user error.



NumaManage is a patient scheduling and workflow manager designed to streamline the workflow process. Instead of multiple data entry ports, patient information only needs to be added once and then it is accurately distributed throughout a department reducing errors and time.

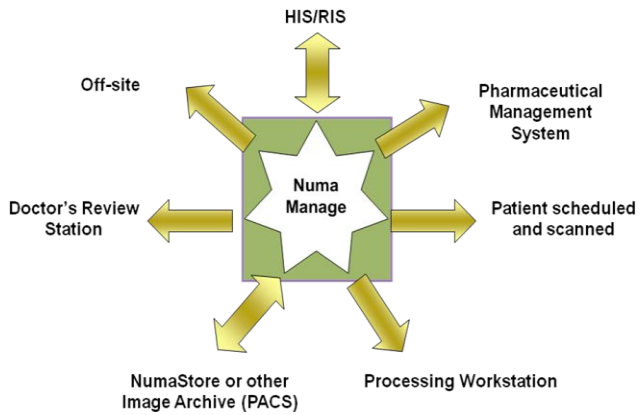
Existing problems with department workflow:

- Multiple manual data entry points
- Inconsistent / inaccurate data entry
- No communication link between pharmaceutical management systems and imaging system
- Inadequate scheduling tools for nuclear medicine procedures
- Insufficient DICOM Modality Worklist connectivity and functionality

NumaManage can help:

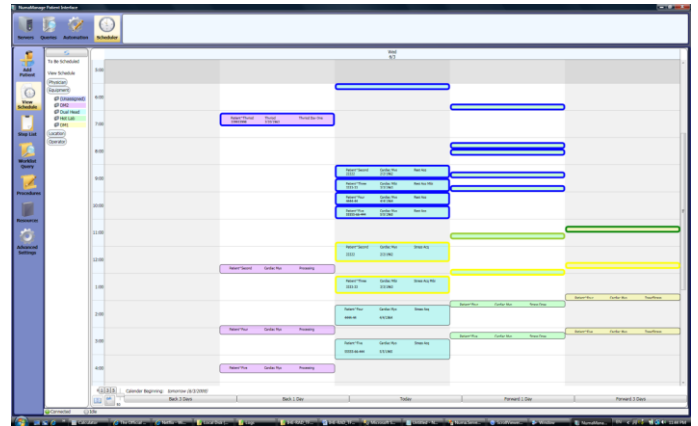
- Patient information is only entered once
- Easily schedule patients and assign equipment and technologist
- The patient schedule can be easily edited synchronized in real time and distributed throughout departments
- Send Worklist information to imaging systems, hot lab and other equipment
- Interface to HIS/RIS to customize the Worklist and schedule

Manage and Distribute accurate patient information



NumaManage communicates with the hospitals HIS/RIS to retrieve patient information. The information is then shared with the computer systems within the department. NumaManage prompts the user with the department's imaging protocols to assist in making scheduling decisions. Through NumaManage, personnel and patients can be assigned to cameras and/or rooms. The flow of the patient imaging process can be tracked as it progresses through each step of the study workflow.

NumaManage displays the schedule as in a "Digital Whiteboard Format". The schedule entries are color coded so that the current status of the study can be easily determined. The schedule can be changed by dragging and dropping studies into the new time slot. All users are updated in real time to changes to the schedule. The schedule can be sorted by Physician, Equipment, Location or Operator.



Efficiency Through Connectivity



Medical Imaging Information Technology



Numa, Inc. 10 Northern Blvd. Unit 12 • Amherst, NH 03031 • Phone: (603) 883-1909 • Fax: (603) 883-0839

Email: info@numa-inc.com • www.numa-inc.com